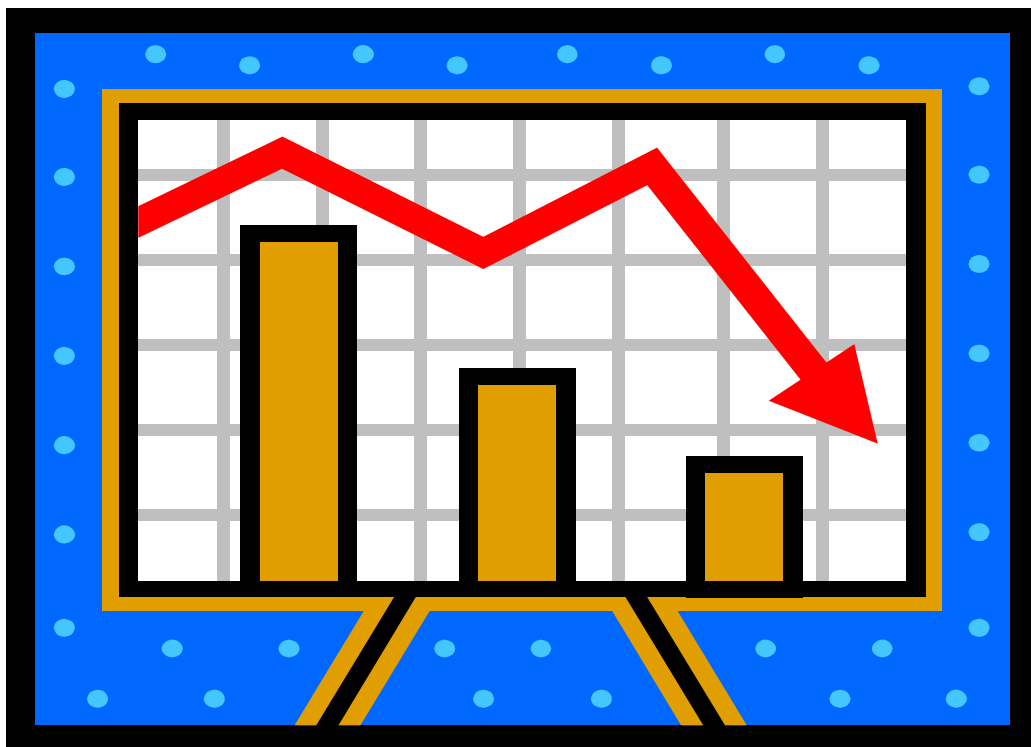


Lane County
Department of Youth Services
Juvenile Justice

Juvenile Re-offense
Report

June 2009



Contact:

Linda Wagner, Senior Management Analyst

541.682.4792

Linda.M.Wagner@co.lane.or.us

www.lanecounty.org/ys

TABLE OF CONTENTS

Findings in Brief	2
A Note About Corrections Data & Definitions	4
Background	5
Background of Statewide Re-offense Data	6
Background of Lane County Re-offense Data	7
Lane County Juvenile Re-offense Data Trends by Offender Type and Follow-up Time	9
Overview Data	10
Tracking Period	11
First-time Offenders	15
Chronic Offenders Trend Analysis	17
Lane County Juvenile Re-offense Data Trends by Demographic Data	20
Re-offenses by Gender	21
Re-offenses by Age	23
Re-offenses by Race/Ethnicity	25
Lane County Juvenile Re-offense Data Trends by Area	28
Lane County/Statewide Juvenile Recidivism Data	32
Comparison for Group - Did Not Re-offend	33
Comparison for Group - 1 or 2 New Referrals	35
Comparison for Group - Chronic Offenders	37
Changes Over Time	39
Multiple Year Review	40
Lane County Juvenile Re-offense Data Decision Point and Program Level Data	44
Summary	48
Contacts	49

FINDINGS IN BRIEF

Highlights include - This report looks at how often juvenile offenders re-offend. It looks at the question:

“Of all juvenile offenders referred to the Department of Youth Services for criminal behavior, how many commit more crimes? How many new crimes do they commit?”

The “re-offending” information is used to monitor how effective services are at reducing delinquency. This work, along with national data, offers the following conclusions:

- A small group of juvenile offenders go on to commit the majority of new crimes (2005 for 36 months follow up, 15.4% of offenders committing 64.0% of new crimes - 195 juveniles out of a total of 1,270 with 900 new referrals out of a total of 1,407).

This group is considered the “chronic” group because they commit three (3) or more new criminal referrals during the follow up period.

- These data support local and national research on effective delinquency reduction strategies, known as best practices. The goal of this work is to reduce the likelihood that juvenile offenders go on to commit more crimes after they come to the attention of the juvenile department. This work is accomplished by:
 - Identifying juveniles who are at low, moderate, and high risk to re-offend
 - Providing a balance of corrections and treatment responses that enhance community safety, provide community restoration, hold juveniles accountable and increase their skills. The latter includes reducing risk areas associated with delinquency (e.g., alcohol and other drug use, school failure, negative peers, etc.)
 - Ensuring that the level of treatment responses match offenders risk level (e.g., short-term and less intensive services for juveniles at low risk to re-offend and more intensive services for those at high risk)
- Local data show that Lane County’s juvenile justice system has made good progress at reducing the rate at which juveniles become chronic offenders. These strides were accomplished during a period of increased grant support from state and federal funding agencies (re-offense data in this report ends in 2005 to allow for longer follow-up periods). The community is just beginning to see the impact of recent service reductions due to budget cuts.

Chronic Delinquency – The rate at which juvenile offenders become chronic varies by time and demographic area.

Follow-up Time (2005) – The longer the follow-up time the larger the percentage of chronic offenders:

- After 12 months, 7.9% become chronic (100 out of 1,270 juveniles)
- After 24 months, 12.8% become chronic (163 out of 1,270 juveniles)
- After 36 months, 15.4% become chronic (195 out of 1,270 juveniles)
- While the chronic group after 36 months is larger, they still commit a majority of new crimes - 15.4% of all offenders committed 64.0% of new referrals (195 juveniles out of a total of 1,270 with 900 new referrals out of a total of 1,407)
- Fewer first time offenders become chronic at 36 months as compared to the group as a whole. 15.4% of the entire group and 10.6% first-time offenders were chronic (81 out of 766)

Demographic Data – Juvenile re-offenses vary by demographic data. The percent of chronic juvenile offenders after 36 months for each group includes:

- 17.7% of males (155 of 878) and 10.2% of females (40 of 392)
- The 12 - 13 year age group had the greatest percentage (20.5%) of chronic offenders (45 of 219)
- Caucasian juveniles experienced 15.3% (175 of 1,142)
- Asian, Hispanic, and Native American juveniles experienced between 11.1% – 19.3% (9 of 52 on average)
- African American had the largest group (20.9% - 9 of 43 juveniles)

Re-offenses By Area – The Eugene/Springfield area are more representative of the entire group in terms of chronic offenders at 36 months:

- The urban areas of Eugene/Springfield combined had 16.6% chronic offenders (123 of 742)
- All other areas combined experienced 11.7% chronic offending (36 of 307)

Other:

- Lane is very representative of statewide juvenile re-offense data
- Youth Services utilize re-offense data for system analysis and program evaluations. Examples of that work are included in this report

A NOTE ABOUT CORRECTIONS DATA & DEFINITIONS

Items to consider when reviewing corrections data:

- Small changes in absolute numbers between years may create large percentages. For example, a change from 7 to 3 creates a change of 57 percent. Review both the raw numbers as well as percentages to determine the significance of these changes. Youth Services' reports include both measures when available.
- Data in this report represent criminal referrals to the Lane County Department of Youth Services (Youth Services).
- Status offenses (such as curfews and runaways) and violations (such as tobacco use, possession of less than 1 oz., and MIP's) are not included in the re-offense data in this report.

Definitions:

- Criminal Referrals – A referral is a law enforcement report with one or more incidents of delinquent behavior on it. Juveniles commit both criminal and non-criminal offenses. "Non-criminal" are referrals for violations such as tobacco use, possession of less than 1 oz., MIP's, or runaway and curfew. "Criminal" refers to crimes which are either felonies or misdemeanors for which the offender is subject to fines, confinement, or other correction's conditions.
- Re-offenses – The first criminal referral during an identified year is considered the "qualifying" referral. All referrals after the qualifying referral are counted as re-offenses – also known as recidivism.

BACKGROUND

How effective is the juvenile justice system at reducing juvenile delinquent behavior?

There are a variety of efforts in Lane County to prevent juveniles from ever starting criminal behavior. Also, for juveniles referred to the juvenile justice system, there are services to prevent them from a) going on to commit subsequent crimes, b) becoming chronic offenders and, c) progressing into the adult system. These efforts include:

- Diversion Programs
- Juvenile Detention and youth correctional facilities (short and long-term lock-up)
- Probation Services
- Treatment (for drug issues, sex offenders, anger management, family services, out-of-home services, etc.)

How successful has this work been at preventing juvenile offenders from committing more crimes or from becoming chronic offenders? Too often, arrest data are used to try and answer that question. These data are a weak representation of the impact of the corrections system for several reasons. Among them is the fact that more than a third of all juvenile offenders each year are first time offenders. The juvenile department has not worked with them before and, therefore, cannot be expected to have changed their behavior. Re-offense data (also known as recidivism data) is the best measurement of system and program impact.

Background on Statewide Re-offense Data – In 1995 Oregon’s Senate Bill 1 established requirements for a statewide report on re-offenses (recidivism) for juvenile offenders. It called for the newly formed Oregon Youth Authority to work in partnership with the Oregon Juvenile Department Directors’ Association (OJDDA), and the Commission on Children and Families (CCF) to report on juvenile re-offending. The Lane County Department of Youth Services (Youth Services) research staff had been tracking re-offenses for the county for several years prior to SB 1. They participated in the statewide effort to a) standardized a definition for juvenile re-offenses in Oregon, b) develop measurements to track this definition and c) establish reporting methodologies. Youth Services was also involved in developing the template for the statewide report.

The Oregon Youth Authority has published several statewide reports on juvenile re-offenses. Those reports look at all juvenile offenders during a specific year and track the extent to which they re-offend over a 12 month follow-up period. They include statewide and county specific data. These reports can be accessed on the Oregon Youth Authority web page at: http://www.oregon.gov/OYA/jjis_data_eval_rpts.shtml

This report uses the following state definition of juvenile recidivism (re-offenses):

Juvenile recidivism tracks re-offending behavior for juveniles who have been referred to juvenile departments. Criminal and non-criminal referrals are tracked separately so as not to skew public safety issues with youth acting out issues. Recidivism is defined:

As a measure of public safety, recidivism is defined as a new criminal referral. A referral is a law enforcement report to a juvenile department alleging one or more felony and / or misdemeanor acts (offenses). Measurement of recidivism includes the rate and severity of new crimes and other relevant factors.

As a further measure of behaviors which put youth and communities at risk, referrals to a juvenile department for non-criminal violations, including status offenses, will be reported.

Background of Lane County Re-offense Data – Oregon’s work on establishing statewide definitions and reporting standards on juvenile re-offending “raised the bar” in terms of national efforts to conduct this research. Youth Services, however, required more flexibility with local reporting options. They worked with programmers at the Lane County Information Services Department, who consulted with Oregon Youth Authority, to build that local capacity. Youth Services’ staff uses these local options to:

- Track re-offenses by demographics (age, gender, race/ethnicity)
- Track re-offenses for first time offenders in addition to juveniles more involved in the juvenile justice system
- Establish program performance measures
- Conduct program evaluations
- Track re-offenses for longer periods of time

In terms of the latter, Youth Services has the option to extend the follow-up time beyond the one year marker currently used statewide. Youth Services tracks re-offense for up to three years even though local technology allows for longer tracking periods. The rationale for stopping at 36 months is based on the following:

- Most studies on juvenile re-offending track youth for one year
- Two years is a significant follow-up period in the field and three years or more are the exception in general research
- There are studies, however, that track juveniles for more than three years but those research endeavors typically have incentives (money) to give to youth to stay in contact with the evaluators
- Youth Services does not use funds for these purposes and ends follow-up time at the three-year mark

Three Levels of Data Review – Re-offenses are reviewed at the system, decision point, and program levels. Each includes:

- System – Tracks all juvenile offenders referred to Youth Services
- Decision Point – Tracks juvenile offenders at specific decision points within the department, e.g., intake, on probation, in detention, out-of-home placements, etc.
- Program – Tracks the rate of change in delinquent behavior before and after a youth is referred to a specific program, e.g., anger management, juvenile drug court, community service, family interventions, etc.

Report Purpose – This report looks at re-offense at the system level (similar data are tracked at the decision points and program levels). This report includes a review of re-offenses for:

- All youth referred for a specific year
- First time offenders only
- Demographic information
- Area of Lane County
- Lane County/State comparison

It shows recidivism for 12, 24 and 36 months tracking time.

The data looks at the extent to which juvenile offenders:

- **Do Not Re-offend** – This is used in all analyses, but is the primary outcome measurement for juveniles engaged in the early parts of the system, e.g., diversion programs and interventions for first time offenders. It is included in this report.
- **Have One or Two New Referrals** – This is used primarily with the system-wide analyses and is included in this report.
- **Become Chronic Offenders** – “Chronic” is defined as three or more (3+) new referrals during an identified follow-up period. It is also included in this report.

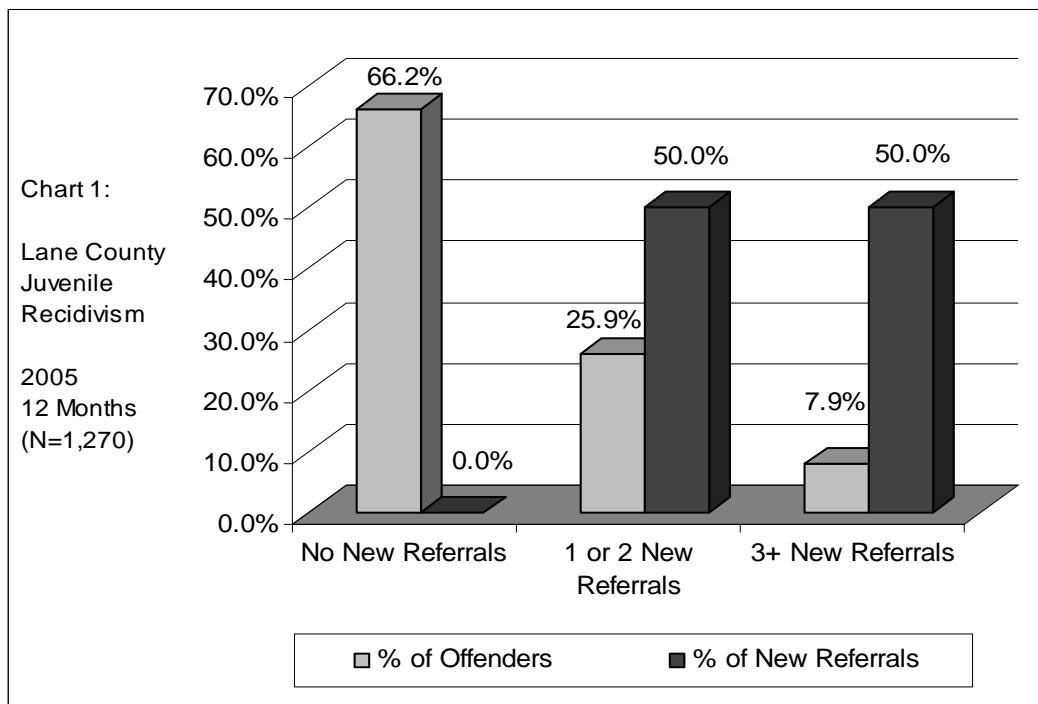
***LANE COUNTY JUVENILE RE-OFFENSE
DATA***

***Trends by Offender Type
and Follow-up Time***

Overview Data – Chart 1 below provides a basic representation of re-offense data. It includes all juveniles referred to Youth Services in 2005 for a criminal referral and tracks their subsequent referrals for a 12 month follow-up period. These data are also represented in the statewide re-offense (recidivism) report produced by the Oregon Youth Authority.

Findings include:

- The majority of offenders (66.2%) did not have a subsequent criminal referral
- A minority of offenders became chronic – 7.9% of all offenders had 50.0% of all new criminal referrals. Chronic is defined as those with three or more new referrals during the follow-up period.

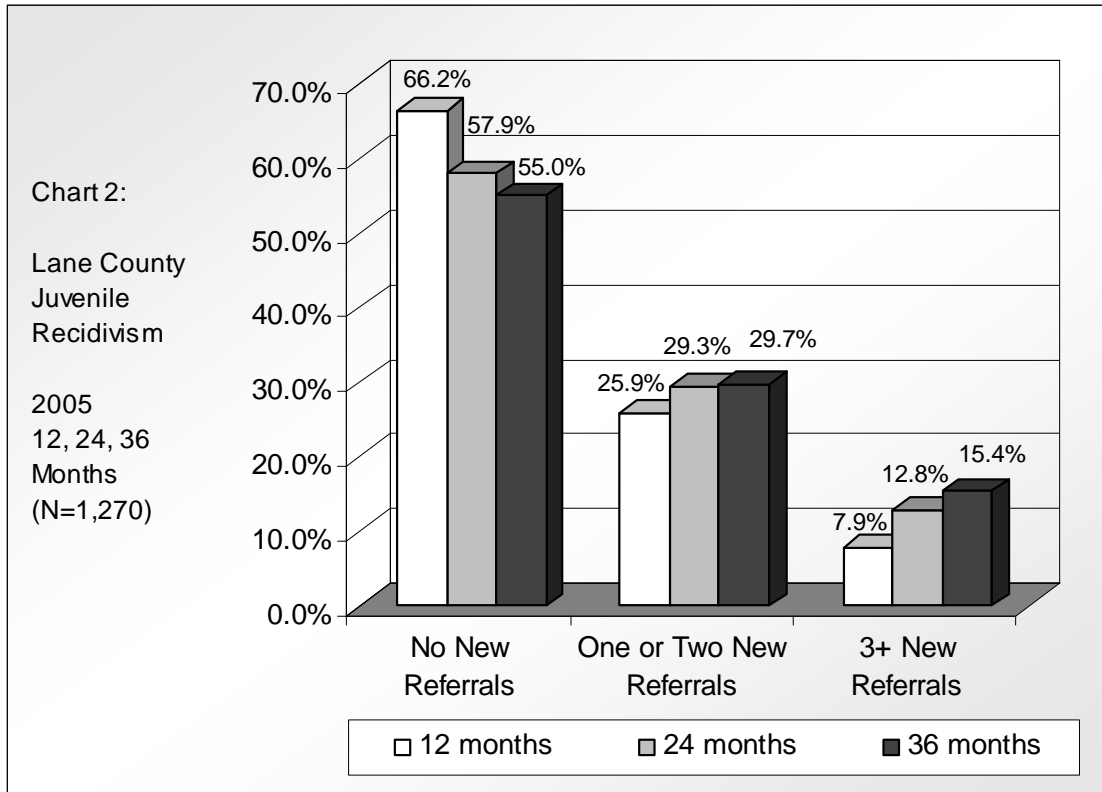


This theme - a smaller group commit a majority of juvenile crime - will be seen throughout this entire report. It is a constant theme in local, statewide, and even national juvenile re-offense data. They suggest that a very small group, 8%, become chronic offenders. This is very significant information and used in the juvenile justice field to guide policy and programs such as intervention based on risk level. The goal is to provide appropriate levels of responses based on risk to re-offend; e.g., less intensive responses for low risk to re-offend and more intensive responses for juvenile offenders determined to be at higher risk. .

Attempting to target the 8% group for more intensive services can lead to significant reductions in juvenile offending; however, more detailed data tells us that the high risk to re-offend group is larger than these data suggest and vary based on tracking period, offenders' length of history, and demographics.

Tracking Period – Youth Services extended the follow-up period to look at impact of “time” of offenders. Findings indicate the following:

- A longer follow-up period yields a greater percentage of juveniles who become chronic
- Even though the percent that become chronic is larger than indicated in the shorter follow-up period, there is still a minority of offenders who commit a majority of all new referrals.



These data indicate:

- The percent of offenders who do not re-offend decreased by 11.2% (66.2% at 12 months and 55.0% at 36 months).
- The group who became chronic offenders doubled with longer tracking periods (7.9% at 12 months and 15.4% at 36 months).

Table 1: Lane County Juvenile Re-offenses by Follow-up Time

2005 for 12 months follow-up

	Number of Offenders	% of Offenders	Number of New Referrals	% of New Referrals
No New Referrals	841	66.2%	0	0.0%
1 or 2 New Referrals	329	25.9%	420	50.0%
3+ New Referrals	100	7.9%	420	50.0%
Total:	1,270	100.0%	840	100.0%

2005 for 24 months follow-up

	Number of Offenders	% of Offenders	Number of New Referrals	% of New Referrals
No New Referrals	735	57.9%	0	0.0%
1 or 2 New Referrals	372	29.3%	480	40.0%
3+ New Referrals	163	12.8%	719	60.0%
Total:	1,270	100.0%	1,199	100.0%

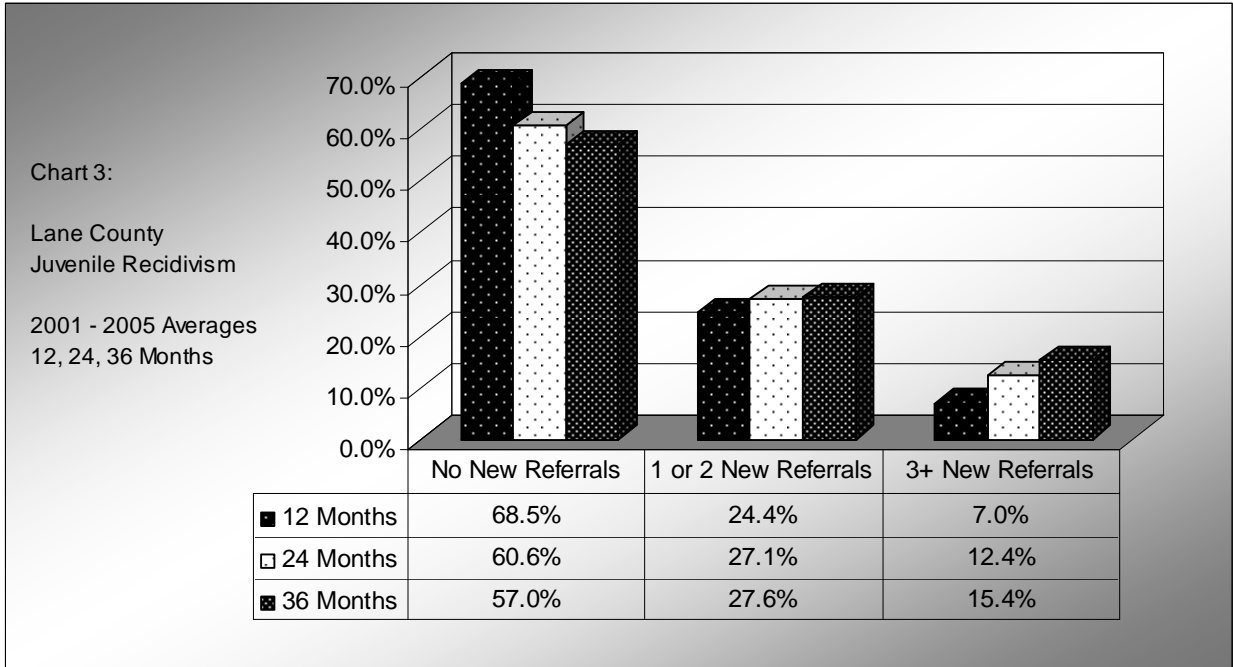
2005 for 36 months follow-up

	Number of Offenders	% of Offenders	Number of New Referrals	% of New Referrals
No New Referrals	698	55.0%	0	0.0%
1 or 2 New Referrals	377	29.7%	507	36.0%
3+ New Referrals	195	15.4%	900	64.0%
Total:	1,270	100.0%	1,407	100.0%

A larger percent of the total group became chronic offenders after 36 months as compared to 12 months, however, the pattern remained the same – a small group of offenders commit a majority of the referrals.

- After 12 months, 7.9% of all offenders commit 50.0% percent of all new referrals (100 offenders with 420 new referrals)
- After 36 months, 15.4% of all offenders commit 64.0% of all new referrals (195 offenders with 900 new referrals)

While the previous data represent a sample from 12 months (juvenile offenders in 2005 track for various follow-up periods), the theme of a small group commit the majority of new offenses is seen for each year tracked. The following information is based on averages over a five-year period.



Summary – The raw data related to Chart 3 is on the following page. These averages are similar to single year data in that:

- The percent of offenders who do not re-offend decreases with the longer follow-up time
- The percent with one or two new referrals are relatively consistent
- The percent of offenders who become chronic increases

Table 2: Lane County Juvenile Re-offenses: Five-year Averages by Follow-up Time

2001 - 2005 Averages for 12 months follow-up

	Number of Offenders	% of Offenders	Number of New Referrals	% of New Referrals
No New Referrals	1,038	68.5%	0	0.0%
1 or 2 New Referrals	370	24.4%	476	50.3%
3+ New Referrals	107	7.0%	470	49.7%
Total Avg.	1,514	100.0%	946	100.0%

2001 - 2005 Averages for 24 months follow-up

	Number of Offenders	% of Offenders	Number of New Referrals	% of New Referrals
No New Referrals	917	60.6%	0	0.0%
1 or 2 New Referrals	410	27.1%	539	37.8%
3+ New Referrals	187	12.4%	887	62.2%
Total Avg.	1,514	100.0%	1,426	100.0%

2001 - 2005 Averages for 36 months follow-up

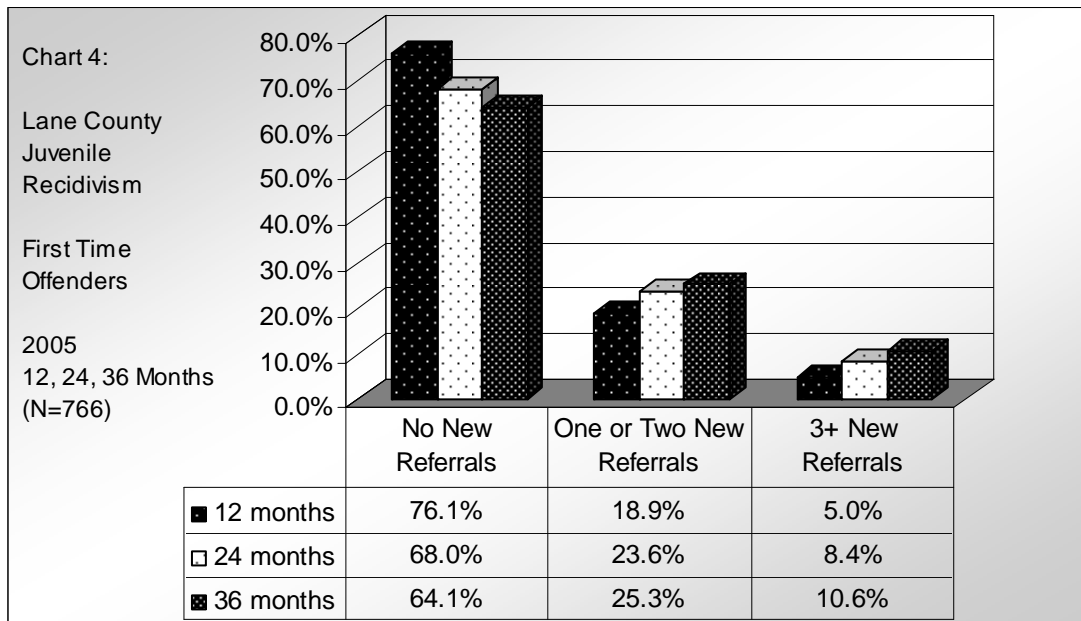
	Number of Offenders	% of Offenders	Number of New Referrals	% of New Referrals
No New Referrals	863	57.0%	0	0.0%
1 or 2 New Referrals	418	27.6%	553	31.9%
3+ New Referrals	233	15.4%	1,179	68.1%
Total Avg.	1,514	100.0%	1,732	100.0%

The five-year averages reflect what was seen in the single year data:

- A small percentage become chronic after 12 months (7.0%) as compared to 36 months (15.4%)
- After 12 months, the chronic group committed 49.7% of all new referrals
- After 36 months, the chronic group committed 68.1% of all new referrals

First-Time Offenders – Thus far, this report has looked at the influence of extending the follow-up time on juvenile re-offending. These previous data are based on all juvenile offenders referred to Youth Services during a specific year. Once referred, all subsequent referrals were considered “re-offenses (recidivism).” For example, all juveniles with a criminal referral in 2005 were identified. The first criminal offense in 2005 was the “qualifying” referral. All subsequent referrals for 12, 24, and 36 months were counted as “re-offense” data. These offenders, however, may have had previous referrals in the years before 2005. Hence, this group could include offenders whose 2005 qualifying referral was their very first in their entire history or their first in 2005 but their tenth in their entire history.

The mix is a good starting place and answers the question, “What are re-offense data for all youth referred to Youth Services in a specific year?” But further analysis is needed to control for any unknown influences of mixing first time offenders with other offenders. To address this issue, Youth Services looked at all first-time offenders referred to the juvenile department—juveniles with no other history of criminal offenses.



Re-offense data for first-time offenders indicate:

- First-time offenders are less likely to re-offend than the entire juvenile offender population. After 36 months, 64.1% of first time offenders did not re-offend compared to 55.0% of all offenders for that year (see Chart 2, page 11, for all offenders)
- First-time offenders are slightly less likely to become chronic offenders compared to all juvenile offenders. After 36 months, 10.6% of first time offenders became chronic compared to 15.4% of all juvenile offenders.

Table 3: Lane County Juvenile Re-offenses for First-Time Offenders

2005 for 12 months follow-up

	Number of Offenders	% of Offenders	Number of New Referrals	% of New Referrals
No New Referrals	583	76.1%	0	0.0%
1 or 2 New Referrals	145	18.9%	178	52.4%
3+ New Referrals	38	5.0%	162	47.6%
Total:	766	100.0%	340	100.0%

2005 for 24 months follow-up

	Number of Offenders	% of Offenders	Number of New Referrals	% of New Referrals
No New Referrals	521	68.0%	0	0.0%
1 or 2 New Referrals	181	23.6%	224	44.1%
3+ New Referrals	64	8.4%	284	55.9%
Total:	766	100.0%	508	100.0%

2005 for 36 months follow-up

	Number of Offenders	% of Offenders	Number of New Referrals	% of New Referrals
No New Referrals	491	64.1%	0	0.0%
1 or 2 New Referrals	194	25.3%	251	40.5%
3+ New Referrals	81	10.6%	369	59.5%
Total:	766	100.0%	620	100.0%

Chronic Offenders Trend Analysis for 36 Months Follow-up – Single year analysis and averages of multiple years have been provided in previous charts and tables. To follow are single-year trend reviews of juvenile re-offenses in Lane County. Chart 5 below illustrates juvenile re-offenses after 36 months of tracking for each year – the group in 2001 was tracked for 36 months as was the group in 2001, 2002, etc.

- The percent of juvenile offenders who do not re-offend experienced an increase over the five years from 53.1% to 55.0%
- The percent who commit one or two new criminal referrals decreased over the five years from 30.3% to 29.7%
- The juveniles who became chronic indicate a decrease over five years, 16.6% to 15.4%

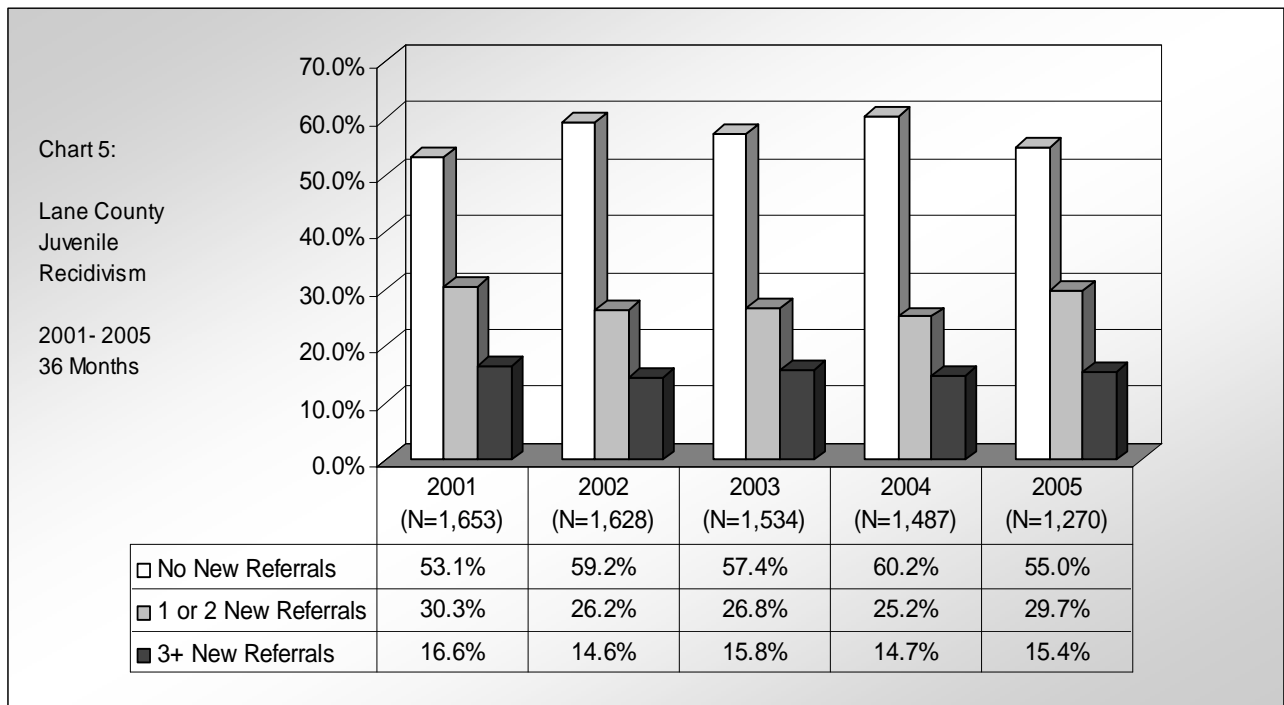


Table 4: Lane County Juvenile Re-offenses Trend for Chronic Group

2001 for 36 months follow up

	Number of Offenders	% of Offenders	Number of New Referrals	% of New Referrals
No New Referrals	878	53.1%	0	0.0%
1 or 2 New Referrals	501	30.3%	657	30.9%
3+ New Referrals	274	16.6%	1,469	69.1%
Total:	1,653	100.0%	2,126	100.0%

2002 for 36 months follow up

	Number of Offenders	% of Offenders	Number of New Referrals	% of New Referrals
No New Referrals	964	59.2%	0	0.0%
1 or 2 New Referrals	427	26.2%	556	31.3%
3+ New Referrals	237	14.6%	1,219	68.7%
Total:	1,628	100.0%	1,775	100.0%

2003 for 36 months follow up

	Number of Offenders	% of Offenders	Number of New Referrals	% of New Referrals
No New Referrals	880	57.4%	0	0.0%
1 or 2 New Referrals	411	26.8%	542	30.7%
3+ New Referrals	243	15.8%	1,222	69.3%
Total:	1,534	100.0%	1,764	100.0%

2004 for 36 months follow up

	Number of Offenders	% of Offenders	Number of New Referrals	% of New Referrals
No New Referrals	895	60.2%	0	0.0%
1 or 2 New Referrals	374	25.2%	502	31.6%
3+ New Referrals	218	14.7%	1,087	68.4%
Total:	1,487	100.0%	1,589	100.0%

2005 for 36 months follow up

	Number of Offenders	% of Offenders	Number of New Referrals	% of New Referrals
No New Referrals	698	55.0%	0	0.0%
1 or 2 New Referrals	377	29.7%	507	36.0%
3+ New Referrals	195	15.4%	900	64.0%
Total:	1,270	100.0%	1,407	100.0%

The decrease in chronic delinquency is difficult to achieve, but even relatively small decreases with this group has significant impact on reduced victimizations by juvenile offenders. For example, if the system had been as successful in limiting the group who became chronic in 2001 it was in 2005 there would have been 854 fewer juvenile crimes in 2001. In order to track this conclusion, the following needs to be represented.

- Re-offense data are based on criminal *referrals*
- A referral is a report from law enforcement officials
- Each referral lists the type and number of crimes a juvenile allegedly committed (referred to in the system as allegations)
- There is an average of 1.5 crimes on each referral

Table 5: Lane County Juvenile Re-offenses - Estimate of Reduced Crime Due to Reduced Representation in Chronic Offenders

			Avg. Referrals		Referrals		Total Crimes
	N	% Chronic	Number in Chronic Group	Per Offender	Per Chronic Group	Avg. Crimes Per Referral	
2001 Chronic	1,653	16.6%	274	6.0	1,469	1.5	2,204
2001 with 2005 Chronic Group	1,653	15.4%	195	8.5	900	1.5	1,350
Difference in Crime:							854

Because the chronic group is so active in their criminal behavior (committing over 70% of all new referrals over three years), even a minor reduction in this group creates significant reduction in victimization in our community. As seen in the above data:

- A change of only 1.2% in the percent of chronic offenders creates an estimated reduction of over 854 crimes.

This is a graphic illustration of the goal in the Lane County juvenile justice system, to target these high-risk to re-offend delinquent juveniles and provide services that reduces the likelihood that they go on to commit more crimes.

Does that mean that low risk offenders should not receive any services? Research does not at all support that conclusion and practically, victims in the community deserve restoration regardless of whether the juvenile is a first time offender or a chronic offender in the system. What this research does support is what is seen in national data. The key to effective delinquency reduction is to identify the correct response based on each juvenile's risk to re-offend and needs. For all offenders that includes responses to hold juveniles accountable, provide restoration to victims and the community, and to provide treatment and skill building. The level of those interventions, however, should match the risk so that high risk to re-offend juveniles receives more intensive services.

The following sections examine the extent to which demographics influence juvenile re-offense data.

***LANE COUNTY JUVENILE RE-OFFENSE
DATA***

Trends by Demographic Data

Re-offenses by Gender at 36 Months Follow-up – The fact that adolescent females are less criminal than boys is clearly documented in local, state and national arrest data. Re-offense data echo that information and illustrate the extent to which the two differ in re-offending behavior. After 36 months of tracking, data include:

- Females represent 30.9% of all juvenile offenders in the 2005 study
- Significantly more females do not re-offend. 64.0% (251 of 392) females did not re-offend after three years compared to 50.9% (447 of 878) males
- Females had a much smaller group who became chronic offenders, only 10.2% (40 of 392) when compared to males at 17.7% (155 of 878)

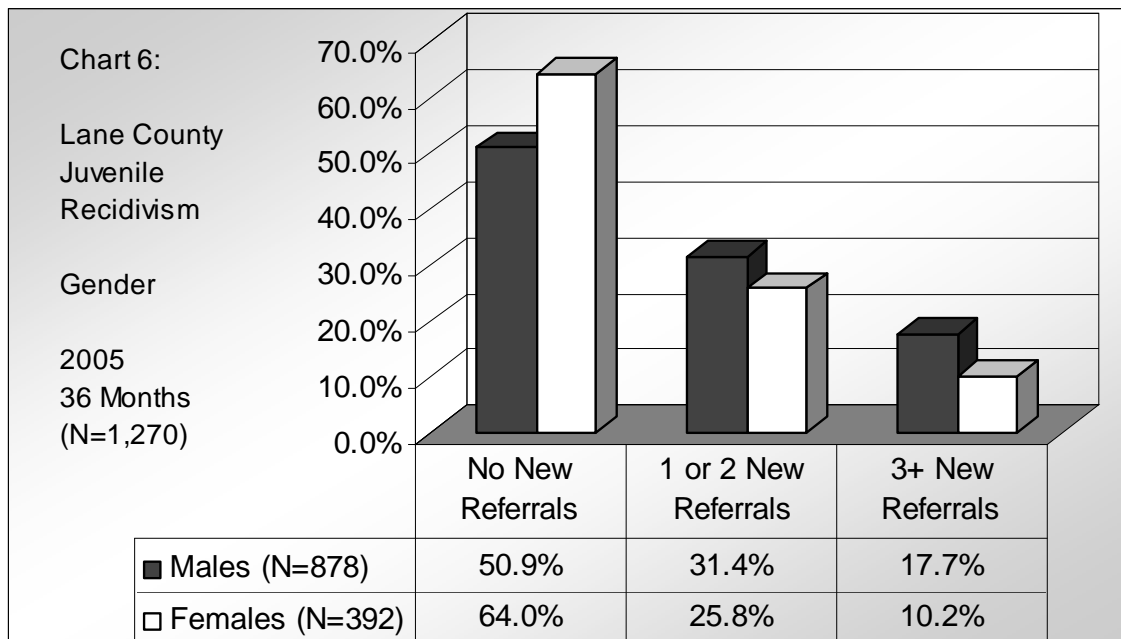


Table 6: Lane County Juvenile Re-offenses by Gender – 2005 Data with 36 months follow-up

Males:

	Number of Offenders	% of Offenders	Number of New Referrals	% of New Referrals
No New Referrals	447	50.9%	0	0.0%
1 or 2 New Referrals	276	31.4%	371	34.2%
3+ New Referrals	155	17.7%	713	65.8%
Total	878	100.0%	1,084	100.0%

Females:

	Number of Offenders	% of Offenders	Number of New Referrals	% of New Referrals
No New Referrals	251	64.0%	0	0.0%
1 or 2 New Referrals	101	25.8%	136	42.1%
3+ New Referrals	40	10.2%	187	57.9%
Total	392	100.0%	323	100.0%

A smaller group of females become chronic and they commit a smaller percent of new referrals.

- 17.7% of males became chronic after 36 months and committed 65.8% of new referrals
- 10.2% of females became chronic after 36 months and committed 57.9% of new referrals

Re-offenses by Age at 24 Months Follow-up – This review of juvenile re-offenses by age looks at three age groups, including 11 and under, 12 & 13 year olds, and 14 & 15 year olds. These groups were tracked for 24 months instead of 36 months to insure that they did not “age out” of the system. The review focuses on those who did not re-offend and those who became chronic offenders. These data include:

- At 24 months the entire group showed that 57.9% did not re-offend and 12.8% became chronic offenders (see Table 1, page 12)

Only the youngest group (11 and under) experienced lower incidents of re-offenses while the 14 & 15 year olds had the most:

- Juveniles 11 and under had 71.2% who did not re-offend and 9.6% of them became chronic
- Juveniles 12 or 13 years old had only 50.7% who did not re-offend and 15.1% of them became chronic
- Juveniles 14 or 15 years old had 51.6% who did not re-offend and 16.3% who became chronic

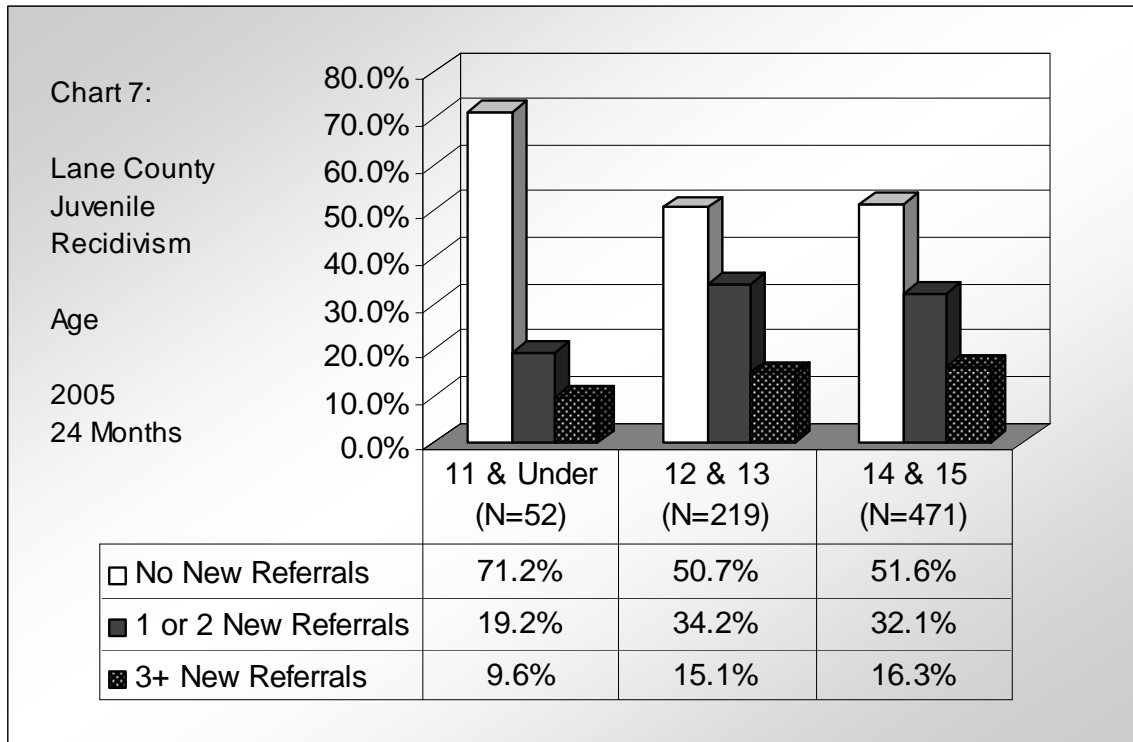


Table 7: Lane County Juvenile Re-offenses by Age

24 MONTHS

11 and under	Number of Offenders	% of Offenders	Number of New Referrals	% of New Referrals
No New Referrals	37	71.2%	0	0.0%
1 or 2 New Referrals	10	19.2%	13	44.8%
3+ New Referrals	5	9.6%	16	55.2%
Total:	52	100%	29	100%

12 & 13	Number of Offenders	% of Offenders	Number of New Referrals	% of New Referrals
No New Referrals	111	50.7%	0	0.0%
1 or 2 New Referrals	75	34.2%	98	41.2%
3+ New Referrals	33	15.1%	140	58.8%
Total:	219	100%	238	100%

14 & 15	Number of Offenders	% of Offenders	Number of New Referrals	% of New Referrals
No New Referrals	243	51.6%	0	0.0%
1 or 2 New Referrals	151	32.1%	199	36.7%
3+ New Referrals	77	16.3%	343	63.3%
Total:	471	100%	542	100%

- For each group, the chronic offenders committed, respectively, 55.2%, 58.8%, and 63.3% of all new referrals
- The 14 & 15 age group had the highest percent who became chronic at 16.3% (77 of 471)

Juvenile Re-offenses by Race/Ethnicity at 36 Months Follow-up – The following charts and tables include juvenile re-offense data by race/ethnicity.

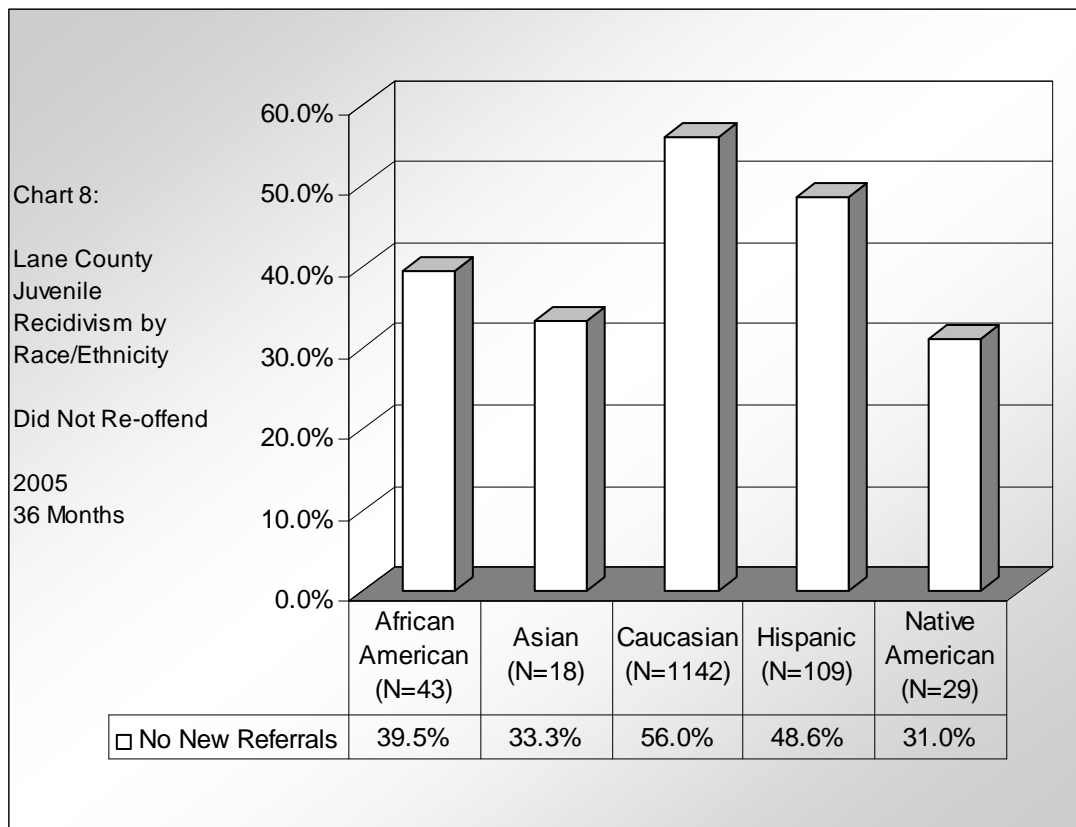


Table 8: Juvenile Re-offenses by Race/Ethnicity for Number Who Did Not Re-offend (No New Referrals)

Number Did Not Re-offend	2001		2002		2003		2004		2005	
	Total	No New Referrals	Total	No New Referrals	Total	No New Referrals	Total	No New Referrals	Total	No New Referrals
African American	62	27	45	25	54	23	65	38	43	17
Asian	16	5	19	7	21	10	17	9	18	6
Caucasian	1,519	807	1,472	871	1,353	772	1,321	792	1,142	639
Hispanic	75	36	70	42	88	55	76	37	109	53
Native American	16	5	22	7	27	10	24	10	29	9

Findings include (for 2005 data):

- Hispanic and Caucasian youth had the largest representation of juveniles who did not re-offend (48.6% and 56.0% respectively)
- Native American, Asian, and African American juveniles each experienced between 31.0% - 39.5% who did not re-offend (31.0% - 9 of 29 Native Americans; 33.3% - 6 of 18 Asians; 39.5% - 17 of 43 African Americans)

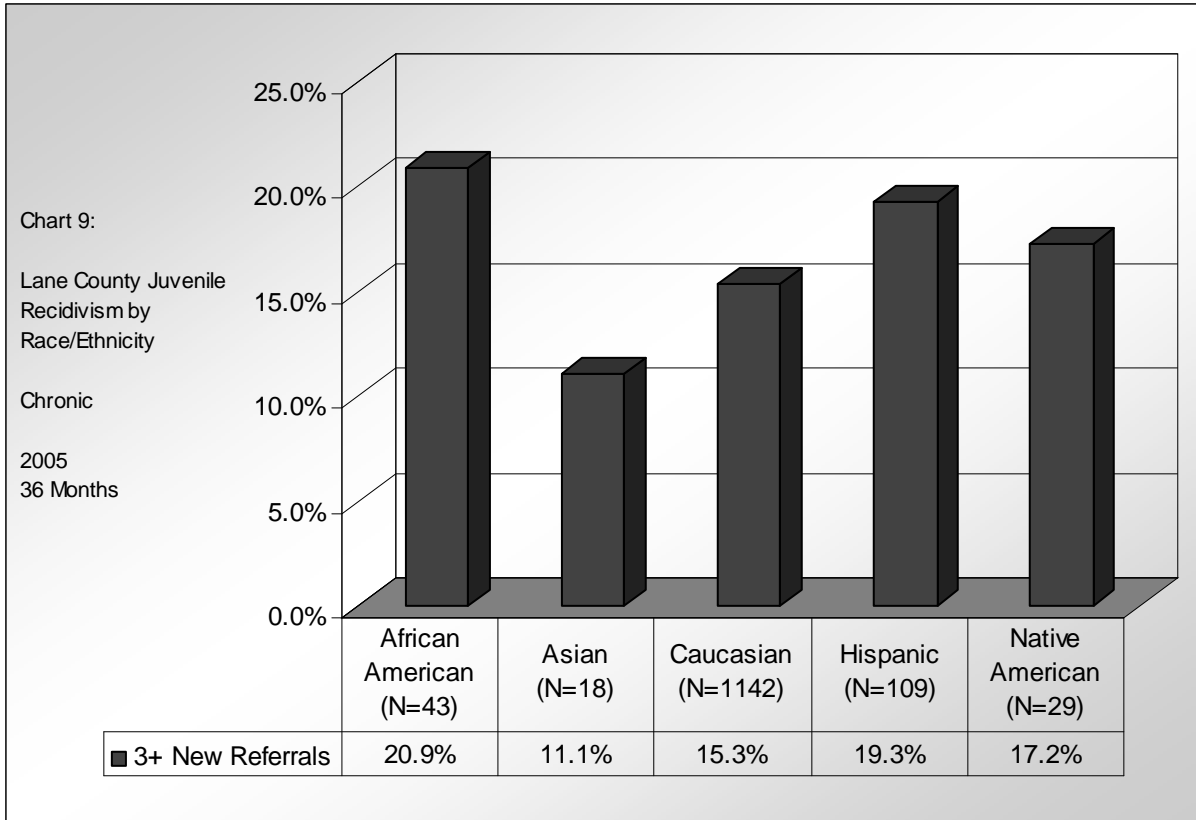


Table 9: Juvenile Re-offenses by Race/Ethnicity for Chronic Group

Number Chronic	2001		2002		2003		2004		2005	
	Total	# Chronic	Total	# Chronic	Total	# Chronic	Total	# Chronic	Total	# Chronic
African American	62	16	45	11	54	15	65	9	43	9
Asian	16	6	19	7	21	4	17	2	18	2
Caucasian	1,519	247	1,472	210	1,353	209	1,321	191	1,142	175
Hispanic	75	16	70	11	88	16	76	19	109	21
Native American	16	5	22	8	27	10	24	9	29	5

- Asian juveniles had the smallest group who became chronic (11.1% - 2 of 18)
- Caucasian juveniles were most representative of the entire group when reviewing chronic re-offenses (15.3% of the Caucasian group became chronic as is seen with 15.4% of the entire group – see Chart 2)
- Native American, Hispanic, and African American each experienced between 17.2% - 20.9% who became chronic offenders (17.2% - 5 of 29 Native Americans; 19.3% - 21 of 29 Hispanics; 20.9% - 9 of 43 African Americans)

Table 10: Lane County Juvenile Re-offenses by Race/Ethnicity – Chronic Offender Trend Data with 36 Month Follow-up

% Chronic @ 36 months	2001	2002	2003	2004	2005	Difference '01-'05
African American	25.8%	24.4%	27.8%	13.8%	20.9%	4.9%
Asian	37.5%	36.8%	19.0%	11.8%	11.1%	26.4%
Caucasian	16.3%	14.3%	15.4%	14.5%	15.3%	0.9%
Hispanic	21.3%	15.7%	18.2%	25.0%	19.3%	2.1%
Native American	31.3%	36.4%	37.0%	37.5%	17.2%	14.0%

As discussed on page 19, reducing the percent of the chronic group, even by slight changes, has a significant impact on juvenile crime.

- Based on race/ethnicity, each group had a decrease.
- The Asian group had the largest change, however, absolute totals should be considered when reviewing these changes. For example, in '01, 6 of the 16 juveniles became chronic (37.5%) and in '05, 2 of the 18 (11.1%) were chronic.

Why do some groups have higher representations of chronic offending? These data do not give a sound response to that question. Because the individuals who are driving the chronic group are relatively small, it is possible to review those data to look at factors which contribute to success or not with each population, e.g., parity in responses based on offense and risk factors, rates and types of risk factors, etc. Youth Services' staff reviews these issues in more detail at the "program level" review where re-offenses based on intervention are examined.

***LANE COUNTY JUVENILE RE-OFFENSE
DATA***

Trends by Area

Juvenile Re-offenses by City at 36 Months Follow-up – Lane County includes over 4,620 square miles of urban and rural areas. It is about the size of the state of Connecticut. Juvenile crime trends are typically reviewed by city. The local technology to study juvenile re-offense data also allows users to review re-offending patterns by area.

These data include juvenile offenders in 2005 and tracked for 36 months.

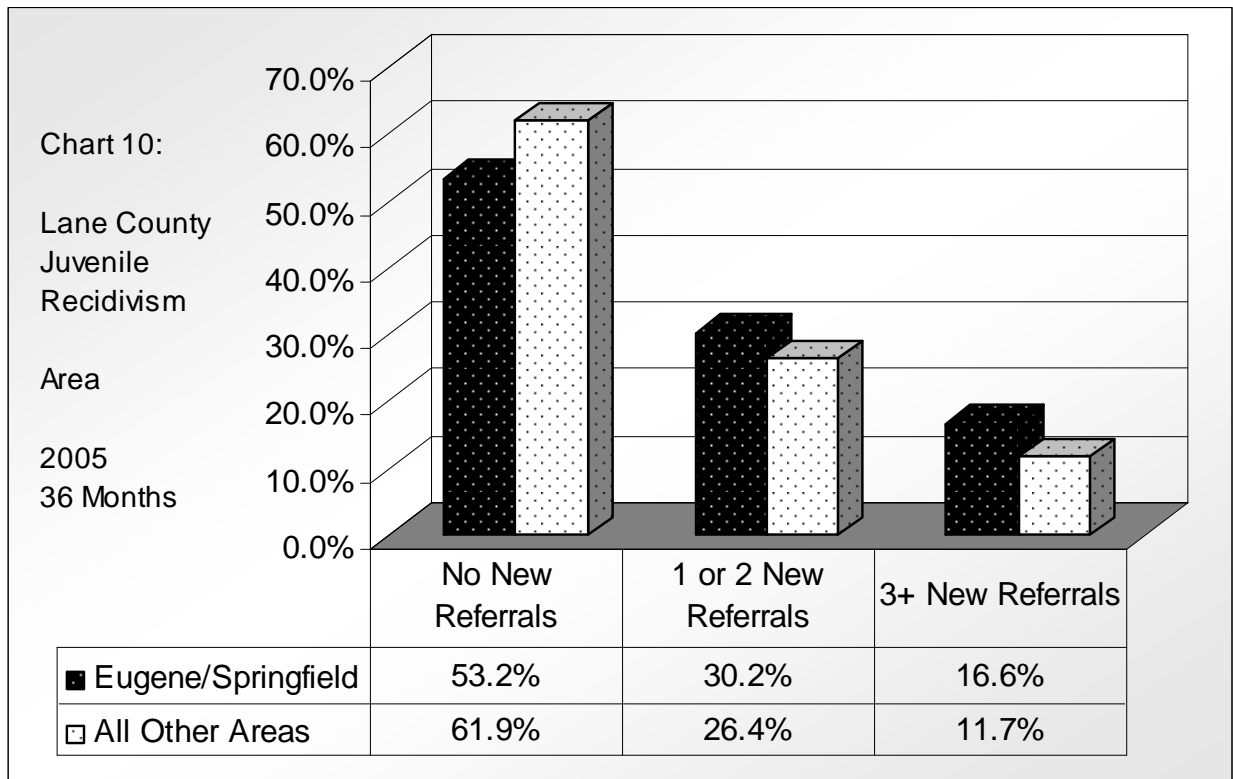


Table 11: Lane County Juvenile Re-offense by Area

BASED ON LARGER AREAS:
2005 Data with 36 Months Follow-up

Eugene & Springfield	Number of Offenders	% of Offenders	Number of New Referrals	% of New Referrals
No New Referrals	395	53.2%	0	0.0%
1 or 2 New Referrals	224	30.2%	300	35.0%
3+ New Referrals	123	16.6%	556	65.0%
Total:	742	100.0%	856	100.0%

All Other Areas	Number of Offenders	% of Offenders	Number of New Referrals	% of New Referrals
No New Referrals	190	61.9%	0	0.0%
1 or 2 New Referrals	81	26.4%	105	39.5%
3+ New Referrals	36	11.7%	161	60.5%
Total:	307	100.0%	266	100.0%

- The urban area is more representative of the entire Lane County group
- Eugene/Springfield had 16.6% of chronic offenders commit 65.0% of new referrals – the entire county had 15.4% of offenders commit 64.0% of new referrals as reflected in Table 1, page 12.

The urban areas had a higher percentage of chronic offenders. Tables on the following pages illustrate that the Eugene and Springfield areas had a significant influence on that higher rate of chronic offenders.

Both Eugene and Springfield had a higher percent of all offenders in their respective areas become chronic (14.4% and 19.4%). The small numbers in these areas influence these large percentages. For example:

- County-wide 15.4% of all chronic offenders commit about 64.0% of all new referrals (see Table 1)
- In Eugene, 14.4% of all chronic offenders commit 63.6% of all new referrals (60 youth were responsible for 295 of the new referrals out of this group).
- In Springfield, 19.4% of all offenders became chronic and committed 66.6% of new referrals (63 youth were responsible for 261 of the new referrals out of this group).

Table 12: Lane County Juvenile Re-offenses by Area - 2005 Data with 36 Months Follow-up

BASED ON LARGER AREAS:
2005 Data with 36 Months Follow-up

Eugene	Number of Offenders	% of Offenders	Number of New Referrals	% of New Referrals
No New Referrals	229	54.8%	0	0.0%
1 or 2 New Referrals	129	30.9%	169	36.4%
3+ New Referrals	60	14.4%	295	63.6%
Total:	418	100.0%	464	100.0%

Springfield	Number of Offenders	% of Offenders	Number of New Referrals	% of New Referrals
No New Referrals	166	51.2%	0	0.0%
1 or 2 New Referrals	95	29.3%	131	33.4%
3+ New Referrals	63	19.4%	261	66.6%
Total:	324	100.0%	392	100.0%

Cottage Grove	Number of Offenders	% of Offenders	Number of New Referrals	% of New Referrals
No New Referrals	44	56.4%	0	0.0%
1 or 2 New Referrals	25	32.1%	33	42.9%
3+ New Referrals	9	11.5%	44	57.1%
Total:	78	100.0%	77	100.0%

Florence	Number of Offenders	% of Offenders	Number of New Referrals	% of New Referrals
No New Referrals	20	80.0%	0	0.0%
1 or 2 New Referrals	2	8.0%	2	18.2%
3+ New Referrals	3	12.0%	9	81.8%
Total:	25	100.0%	11	100.0%

Oakridge	Number of Offenders	% of Offenders	Number of New Referrals	% of New Referrals
No New Referrals	12	41.4%	0	0.0%
1 or 2 New Referrals	13	44.8%	18	54.5%
3+ New Referrals	4	13.8%	15	45.5%
Total:	29	100.0%	33	100.0%

Junction City	Number of Offenders	% of Offenders	Number of New Referrals	% of New Referrals
No New Referrals	14	19.7%	0	0.0%
1 or 2 New Referrals	11	15.5%	12	41.4%
3+ New Referrals	4	5.6%	17	58.6%
Total:	29	40.8%	29	100.0%

All Other Areas	Number of Offenders	% of Offenders	Number of New Referrals	% of New Referrals
No New Referrals	100	68.5%	0	0.0%
1 or 2 New Referrals	30	20.5%	40	34.5%
3+ New Referrals	16	11.0%	76	65.5%
Total:	146	100.0%	116	100.0%

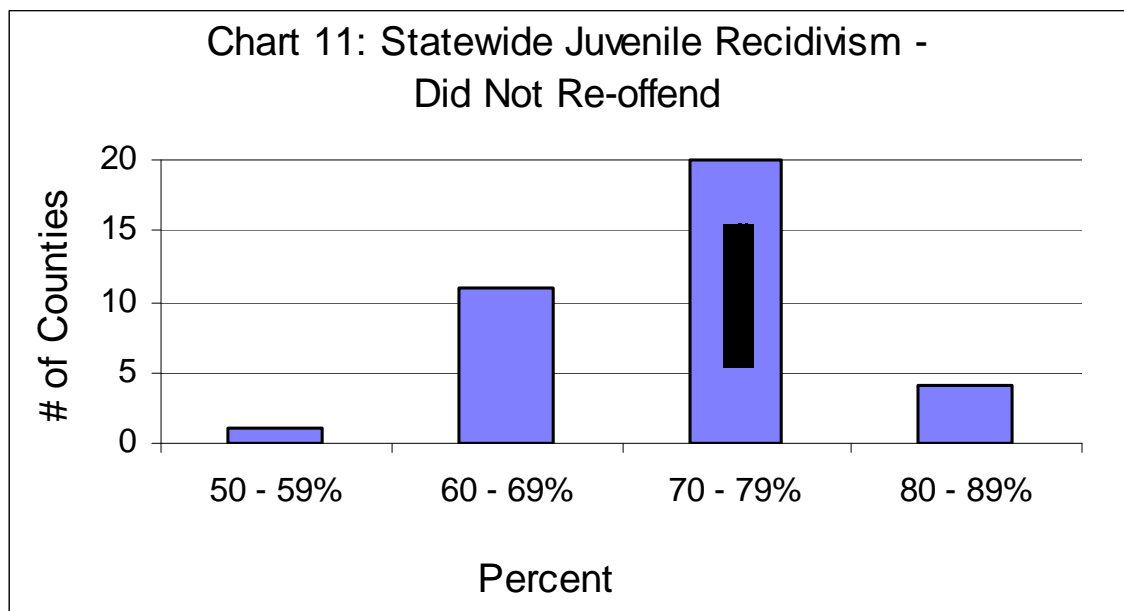
***LANE COUNTY/STATEWIDE JUVENILE
RECIDIVISM DATA***

Lane Compared to Statewide Recidivism Data at 12 Months Follow-up – These analyses are limited to the 12 month follow-up period as the state has not yet released longer follow-up studies. This report looks at 2007 data released from the Oregon Youth Authority (OYA) report¹. It includes all juvenile offenders who had a criminal referral in 2007 and tracks the number / percent of new criminal referrals for 12 months after that referral. These subsequent referrals are considered “recidivism.” A summary of the comparison includes:

Did Not Re-offend – Lane is very similar to statewide data when comparing offenders in 2007 who did not re-offend over a 12 month follow up period. These data include:

- 73.7% of Lane County juvenile offenders did not re-offend (1,047 of 1,420)
- 70.1% of juvenile offenders statewide did not re-offend (12,085 of 17,248)
- Of the 36 counties, Lane is number 10 when ranking the percent of offenders who did not re-offend.
- The majority of counties in Oregon, including Lane, had between 70 to 79 percent of all juveniles who did not re-offend.

Chart 11, below and Table 13 on the following page illustrate these findings. Chart 11 illustrates the number of counties with specific percentage ranges for their non-offenders. For example, four (4) counties had anywhere from 80 to 89 percent of their offenders who did not re-offend in 12 months. Lane is one of 20 counties that had between 70 to 79 percent of all 2007 offenders who did not re-offend.



¹ Source: Oregon Youth Authority and Oregon Juvenile Department Directors’ Association, Data & Evaluation Reports Recidivism Charts and Trends (2007)

Table 13: Ranking by No New Referrals

2007 Juvenile Recidivism All Juvenile Offenders By County		No New Referrals		Subsequent Referrals			
				1 or 2 New Referrals		3+ New Referrals (chronic)	
County	Total Youth	Youth	%	Youth	%	Youth	%
Gilliam	9	8	88.9%	1	11.1%	0	0.0%
Curry	102	83	81.4%	17	16.7%	2	2.0%
Lake	35	28	80.0%	5	14.3%	2	5.7%
Sherman	5	4	80.0%	1	20.0%	0	0.0%
Coos	243	192	79.0%	40	16.5%	11	4.5%
Jefferson	151	118	78.1%	29	19.2%	4	2.6%
Morrow	94	73	77.7%	19	20.2%	2	2.1%
Clackamas	1,304	996	76.4%	261	20.0%	47	3.6%
Benton	216	160	74.1%	51	23.6%	5	2.3%
Lane	1,420	1,047	73.7%	310	21.8%	63	4.4%
Klamath	413	302	73.1%	92	22.3%	19	4.6%
Josephine	323	236	73.1%	65	20.1%	22	6.8%
Columbia	240	175	72.9%	53	22.1%	12	5.0%
Wasco	173	126	72.8%	39	22.5%	8	4.6%
Clatsop	209	151	72.2%	51	24.4%	7	3.3%
Harney	28	20	71.4%	8	28.6%	0	0.0%
Union	126	90	71.4%	31	24.6%	5	4.0%
Linn	545	388	71.2%	136	25.0%	21	3.9%
Washington	1,741	1,237	71.1%	420	24.1%	84	4.8%
Yamhill	435	308	70.8%	106	24.4%	21	4.8%
Lincoln	201	142	70.6%	57	28.4%	2	1.0%
Baker	115	81	70.4%	27	23.5%	7	6.1%
Wallowa	27	19	70.4%	7	25.9%	1	3.7%
Deschutes	1,020	716	70.2%	271	26.6%	33	3.2%
Statewide	17,248	12,085	70.1%	4,236	24.6%	927	5.4%
Tillamook	143	99	69.2%	36	25.2%	8	5.6%
Crook	158	109	69.0%	45	28.5%	4	2.5%
Hood River	141	96	68.1%	41	29.1%	4	2.8%
Douglas	562	382	68.0%	142	25.3%	38	6.8%
Multnomah	2,664	1,805	67.8%	675	25.3%	184	6.9%
Marion	1,917	1,295	67.6%	533	27.8%	89	4.6%
Jackson	1,209	812	67.2%	308	25.5%	89	7.4%
Wheeler	12	8	66.7%	4	33.3%	0	0.0%
Polk	359	228	63.5%	95	26.5%	36	10.0%
Malheur	330	209	63.3%	90	27.3%	31	9.4%
Grant	18	11	61.1%	5	27.8%	2	11.1%
Umatilla	560	331	59.1%	165	29.5%	64	11.4%

Table 13 provides detailed information on the ranking of Oregon counties from those with the greatest percentage of juveniles who did not re-offend over a 12 month follow-up period.

The information includes (reading from left column to right and using Lane County as the example):

- County name - Lane
- There were 1,420 total juveniles with a criminal referral in 2007
- Of the total 1,420 juveniles in 2007, 1047 did not re-offend (no new referrals)
- 73.7% of offenders had 0% of new crime (criminal referrals).

The list only provides raw data. It does not provide any type of insight into what factors influence this ranking; e.g., some counties may have more high-risk juvenile offenders, some may have fewer or more resources to deal with the at-risk population, etc.

Without a better understanding of those influences, this **cannot** be interpreted as “better or worse.” It can, however, be used to gauge the extent to which Lane County is representative of the statewide data.

In terms of preventing re-offense, Lane is very similar to statewide data, with only a 3.6% variance.

Re-offending with One or Two New Referrals – This group does not include juveniles who do not re-offend or those who become chronic. Instead, this is the group who go on to commit one or two criminal referrals in the follow-up period. In some aspects, they are the “expected” group. Rather than the complete cessation of delinquent activity, there are a consistent group of juveniles who continue to offend until, 1) they realize they will be held accountable for their actions (which often has not been a pattern in their lives) and/or, 2) they receive the services they need to interrupt their delinquent behavior, e.g., treatment services, skill building, etc.

For offenders in 2007, with 12 months of follow-up, data includes:

- 21.8% of Lane County juvenile offenders (310 of 1,420)
- 24.6% of juvenile offenders statewide (4,236 of 17,248)
- Of the 36 counties, Lane is number 10 when ranking the percent of offenders who commit one to two new referrals.
- The minimum is 11.1% and the maximum is 33.3%
- The most often occurring percentile is 25% (six of the counties are in this range).

Chart 12, below and Table 14 on the following page illustrate these findings. Chart 12 illustrates the number of counties with specific ranges for offenders who commit one or two new referrals. Lane is one of nine (9) counties that had between 17 to 22 percent of their 2007 offenders who go on to commit one to two new criminal referrals.

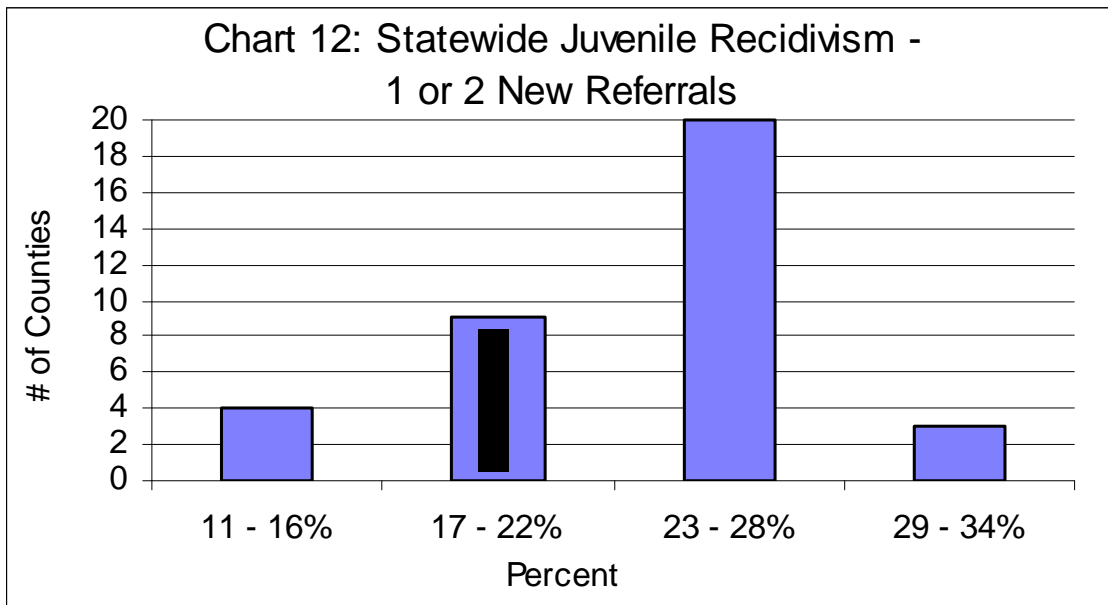


Table 14: Percent Ranking with One or Two New Referrals

2007 Juvenile All Juvenile Offenders By County		No New Referrals		Subsequent Referrals			
				1 or 2 New Referrals		3+ New Referrals (chronic)	
County	Total Youth	Youth	%	Youth	%	Youth	%
Gilliam	9	8	88.9%	1	11.1%	0	0.0%
Lake	35	28	80.0%	5	14.3%	2	5.7%
Coos	243	192	79.0%	40	16.5%	11	4.5%
Curry	102	83	81.4%	17	16.7%	2	2.0%
Jefferson	151	118	78.1%	29	19.2%	4	2.6%
Sherman	5	4	80.0%	1	20.0%	0	0.0%
Clackamas	1,304	996	76.4%	261	20.0%	47	3.6%
Josephine	323	236	73.1%	65	20.1%	22	6.8%
Morrow	94	73	77.7%	19	20.2%	2	2.1%
Lane	1,420	1,047	73.7%	310	21.8%	63	4.4%
Columbia	240	175	72.9%	53	22.1%	12	5.0%
Klamath	413	302	73.1%	92	22.3%	19	4.6%
Wasco	173	126	72.8%	39	22.5%	8	4.6%
Baker	115	81	70.4%	27	23.5%	7	6.1%
Benton	216	160	74.1%	51	23.6%	5	2.3%
Washington	1,741	1,237	71.1%	420	24.1%	84	4.8%
Yamhill	435	308	70.8%	106	24.4%	21	4.8%
Clatsop	209	151	72.2%	51	24.4%	7	3.3%
Statewide	17,248	12,015	69.7%	4,236	24.6%	997	5.8%
Union	126	90	71.4%	31	24.6%	5	4.0%
Linn	545	388	71.2%	136	25.0%	21	3.9%
Tillamook	143	99	69.2%	36	25.2%	8	5.6%
Douglas	562	382	68.0%	142	25.3%	38	6.8%
Multnomah	2,664	1,805	67.8%	675	25.3%	184	6.9%
Jackson	1,209	812	67.2%	308	25.5%	89	7.4%
Wallowa	27	19	70.4%	7	25.9%	1	3.7%
Polk	359	228	63.5%	95	26.5%	36	10.0%
Deschutes	1,020	716	70.2%	271	26.6%	33	3.2%
Malheur	330	209	63.3%	90	27.3%	31	9.4%
Grant	18	11	61.1%	5	27.8%	2	11.1%
Marion	1,917	1,295	67.6%	533	27.8%	89	4.6%
Lincoln	201	142	70.6%	57	28.4%	2	1.0%
Crook	158	109	69.0%	45	28.5%	4	2.5%
Harney	28	20	71.4%	8	28.6%	0	0.0%
Hood River	141	96	68.1%	41	29.1%	4	2.8%
Umatilla	560	331	59.1%	165	29.5%	64	11.4%
Wheeler	12	8	66.7%	4	33.3%	0	0.0%

Table 14 provides detailed information on the ranking of Oregon counties from those with the lowest percentage of juveniles who went on to commit one or two new referrals to those with the greatest percentage. The information includes from left column to right

- County name - Lane
- There were 1,420 juveniles with a criminal referral in 2007
- Of the total 1,420 juveniles in 2007, 310 (21.8%) had one to two new criminal referrals

As stated earlier, without a better understanding of the external influences on these data, they **cannot** be interpreted as “better or worse” because counties have different high/low risk for delinquency populations, practices and resources to deal with juvenile crime.

Lane is representative of statewide data in terms of the percent of juveniles who went on to commit one to two new referrals after 12 months, with only a 2.8% variance.

Chronic Offenders – While best practices in delinquency reduction includes accountability for all offenders, chronic juveniles require more intensive services. A positive impact on this group would significantly reduce victimization by juveniles because it includes a smaller group of offenders who commit the majority of crime. Hence, success with that group, or even a portion of them, will have very positive impacts in the community (see page 18 for chronic group examples).

Data on data for chronic juvenile offenders includes in 2007, with 12 months of follow-up:

- 4.4% of Lane County juvenile offenders (63 of 1,420)
- 5.4% of juvenile offenders statewide (927 of 17,248)
- While Lane is similar to the state, it is ranked on the lower end (or has fewer percent of offenders who become chronic).
- The minimum is 0% and the maximum is 11.4% of all offenders who become chronic.

Chart 13, below and Table 15 on the following page illustrate these findings. Chart 13 illustrates the number of counties with specific ranges for offenders who commit three or more new referrals. Lane is one of 16 counties that has between three to five percent of offenders who become chronic.

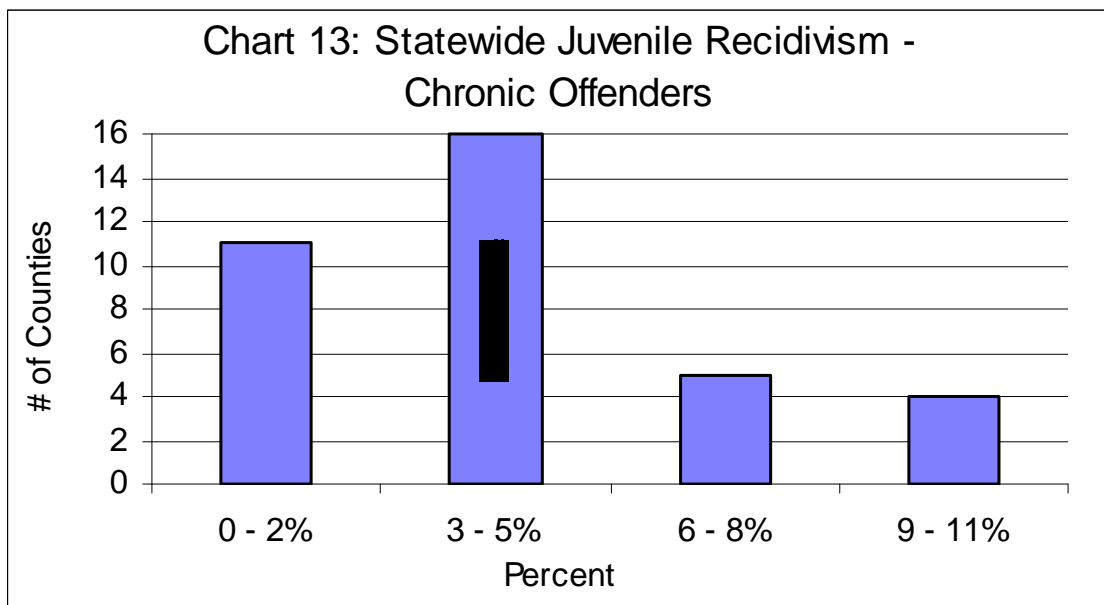


Table 15: Percent Ranking by Chronic Group

2007 Juvenile All Juvenile Offenders By County		No New Referrals		Subsequent Referrals			
				1 or 2 New Referrals		3+ New Referrals (chronic)	
County	Total Youth	Youth	%	Youth	%	Youth	%
Gilliam	9	8	88.9%	1	11.1%	0	0.0%
Harney	28	20	71.4%	8	28.6%	0	0.0%
Sherman	5	4	80.0%	1	20.0%	0	0.0%
Wheeler	12	8	66.7%	4	33.3%	0	0.0%
Lincoln	201	142	70.6%	57	28.4%	2	1.0%
Curry	102	83	81.4%	17	16.7%	2	2.0%
Morrow	94	73	77.7%	19	20.2%	2	2.1%
Benton	216	160	74.1%	51	23.6%	5	2.3%
Crook	158	109	69.0%	45	28.5%	4	2.5%
Jefferson	151	118	78.1%	29	19.2%	4	2.6%
Hood River	141	96	68.1%	41	29.1%	4	2.8%
Deschutes	1,020	716	70.2%	271	26.6%	33	3.2%
Clatsop	209	151	72.2%	51	24.4%	7	3.3%
Clackamas	1,304	996	76.4%	261	20.0%	47	3.6%
Wallowa	27	19	70.4%	7	25.9%	1	3.7%
Linn	545	388	71.2%	136	25.0%	21	3.9%
Union	126	90	71.4%	31	24.6%	5	4.0%
Lane	1,420	1,047	73.7%	310	21.8%	63	4.4%
Coos	243	192	79.0%	40	16.5%	11	4.5%
Klamath	413	302	73.1%	92	22.3%	19	4.6%
Wasco	173	126	72.8%	39	22.5%	8	4.6%
Marion	1,917	1,295	67.6%	533	27.8%	89	4.6%
Washington	1,741	1,237	71.1%	420	24.1%	84	4.8%
Yamhill	435	308	70.8%	106	24.4%	21	4.8%
Columbia	240	175	72.9%	53	22.1%	12	5.0%
Statewide	17,248	12,085	70.1%	4,236	24.6%	927	5.4%
Tillamook	143	99	69.2%	36	25.2%	8	5.6%
Lake	35	28	80.0%	5	14.3%	2	5.7%
Baker	115	81	70.4%	27	23.5%	7	6.1%
Douglas	562	382	68.0%	142	25.3%	38	6.8%
Josephine	323	236	73.1%	65	20.1%	22	6.8%
Multnomah	2,664	1,805	67.8%	675	25.3%	184	6.9%
Jackson	1,209	812	67.2%	308	25.5%	89	7.4%
Malheur	330	209	63.3%	90	27.3%	31	9.4%
Polk	359	228	63.5%	95	26.5%	36	10.0%
Grant	18	11	61.1%	5	27.8%	2	11.1%
Umatilla	560	331	59.1%	165	29.5%	64	11.4%

Table 15 is sorted by counties with the lowest percentage of juveniles who become chronic to those with the greatest percentage. The information includes from left column to right

- County - Lane
- There were 1,420 juveniles with a criminal referral in 2007
- Of the total 1,420 juveniles in 2007, 63 (4.4%) became chronic offenders

As stated earlier, without a better understanding of the external influences on these data, they **cannot** be interpreted as “better or worse” because counties have different high/low risk for delinquency populations, practices and resources to deal with juvenile crime.

Lane is representative of statewide data in terms of the percent of juveniles who commit three (3) or more new referrals after 12 months, with only a 1.0% variance.

Changes in Re-offense Data – Single year comparisons between counties provide a “snapshot” of how Lane County – or other counties - ranks on a statewide basis. However, this information is limited. For example:

- These data, they **cannot** be interpreted as “better or worse” because counties have different high / low risk for delinquency populations, practices and resources to deal with juvenile crime.
- Also, data are “snap shots” of a single year and do not provide any information regarding each county’s progress in dealing with juvenile re-offenses and their respective chronic delinquent group.

The following two tables address this second point by looking at changes with the non-offenders and chronic group over a five year period. These data are critical in determining:

- Extent to which Lane is representative of statewide data
- Progress made in increasing the non-offender population and reducing the chronic group.

For example:

- Lane increased its group that Did Not Re-offend by 5.6% between 2003 and 2007 while the state increased by 2.1%²
- Lane decreased its Chronic group by 2.9% and the state decreased by 1.4%

² Sources: Oregon Youth Authority and Oregon Juvenile Department Directors’ Association, Data & Evaluation Reports Recidivism Charts and Trends (2007), and Juvenile Recidivism Oregon’s Statewide Report on Juvenile Recidivism 2003

Table 16: Oregon Juvenile Offenders Who Did Not Re-offend – Difference Between 2003 & 2007

County	2003			2007			Difference Between '03 & '07
	Total N	# No New	% No New	Total N	# No New	% No New	
Gilliam	3	2	66.7%	9	8	88.9%	22.2%
Sherman	10	6	60.0%	5	4	80.0%	20.0%
Curry	144	92	63.9%	102	83	81.4%	17.5%
Crook	186	104	55.9%	158	109	69.0%	13.1%
Coos	313	210	67.1%	243	192	79.0%	11.9%
Lake	41	28	68.3%	35	28	80.0%	11.7%
Klamath	450	298	66.2%	413	302	73.1%	6.9%
Jefferson	224	160	71.4%	151	118	78.1%	6.7%
Morrow	104	74	71.2%	94	73	77.7%	6.5%
Lane	1,535	1,046	68.1%	1,420	1,047	73.7%	5.6%
Clatsop	291	196	67.4%	209	151	72.2%	4.9%
Tillamook	205	132	64.4%	143	99	69.2%	4.8%
Baker	125	82	65.6%	115	81	70.4%	4.8%
Multnomah	2,738	1,728	63.1%	2,664	1,805	67.8%	4.6%
Yamhill	565	381	67.4%	435	308	70.8%	3.4%
Benton	254	180	70.9%	216	160	74.1%	3.2%
Lincoln	250	170	68.0%	201	142	70.6%	2.6%
Marion	1,885	1,233	65.4%	1,917	1,295	67.6%	2.1%
Statewide	18,397	12,507	68.0%	17,248	12,085	70.1%	2.1%
Josephine	373	266	71.3%	323	236	73.1%	1.8%
Wasco	174	124	71.3%	173	126	72.8%	1.6%
Jackson	1,422	934	65.7%	1,209	812	67.2%	1.5%
Linn	600	419	69.8%	545	388	71.2%	1.4%
Grant	35	21	60.0%	18	11	61.1%	1.1%
Clackamas	1,340	1,012	75.5%	1,304	996	76.4%	0.9%
Columbia	330	240	72.7%	240	175	72.9%	0.2%
Wheeler	6	4	66.7%	12	8	66.7%	0.0%
Deschutes	934	660	70.7%	1,020	716	70.2%	-0.5%
Malheur	388	248	63.9%	330	209	63.3%	-0.6%
Polk	422	273	64.7%	359	228	63.5%	-1.2%
Washington	1,305	952	73.0%	1,741	1,237	71.1%	-1.9%
Union	109	80	73.4%	126	90	71.4%	-2.0%
Douglas	749	534	71.3%	562	382	68.0%	-3.3%
Harney	53	41	77.4%	28	20	71.4%	-5.9%
Umatilla	630	417	66.2%	560	331	59.1%	-7.1%
Hood River	157	120	76.4%	141	96	68.1%	-8.3%
Wallowa	47	40	85.1%	27	19	70.4%	-14.7%

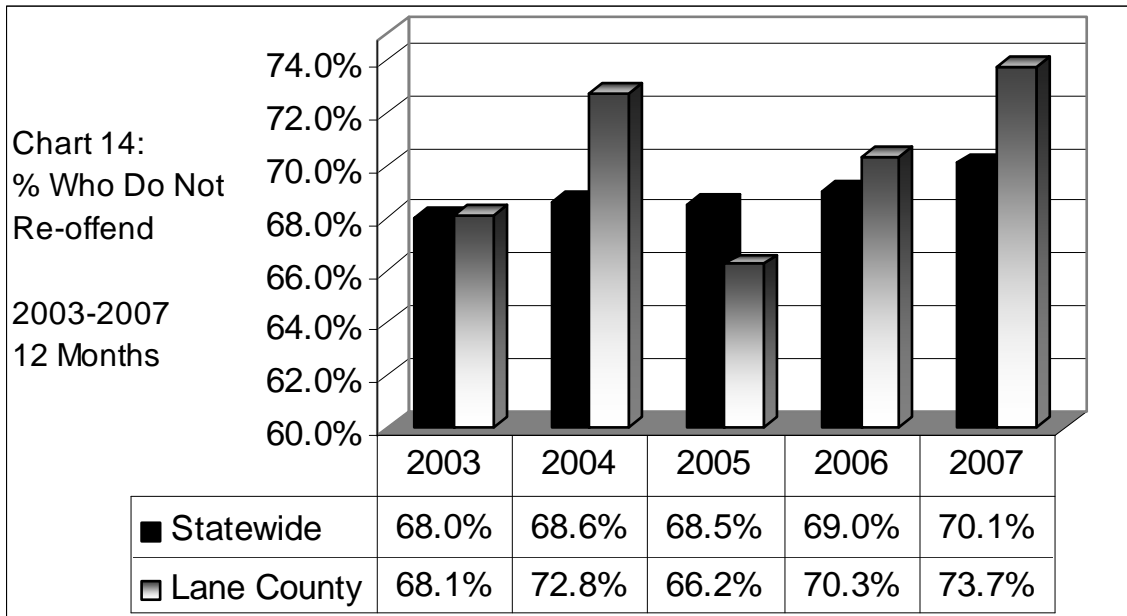
Table 17: Oregon Juvenile Offenders Chronic Group – Difference Between 2003 & 2007

County	2003			2007			Difference Between '03 & '07
	Total N	# Chronic	% Chronic	Total N	# Chronic	% Chronic	
Sherman	10	1	10.0%	5	0	0.0%	-10.0%
Lincoln	250	23	9.2%	201	2	1.0%	-8.2%
Tillamook	205	26	12.7%	143	8	5.6%	-7.1%
Crook	186	17	9.1%	158	4	2.5%	-6.6%
Clatsop	291	24	8.2%	209	7	3.3%	-4.9%
Harney	53	2	3.8%	28	0	0.0%	-3.8%
Morrow	104	6	5.8%	94	2	2.1%	-3.6%
Multnomah	2,738	271	9.9%	2,664	184	6.9%	-3.0%
Curry	144	7	4.9%	102	2	2.0%	-2.9%
Lane	1,535	112	7.3%	1,420	63	4.4%	-2.9%
Marion	1,885	138	7.3%	1,917	89	4.6%	-2.7%
Deschutes	934	55	5.9%	1,020	33	3.2%	-2.7%
Yamhill	565	42	7.4%	435	21	4.8%	-2.6%
Linn	600	32	5.3%	545	21	3.9%	-1.5%
Statewide	18,397	1,248	6.8%	17,248	927	5.4%	-1.4%
Jackson	1,422	123	8.6%	1,209	89	7.4%	-1.3%
Benton	254	9	3.5%	216	5	2.3%	-1.2%
Coos	313	18	5.8%	243	11	4.5%	-1.2%
Klamath	450	26	5.8%	413	19	4.6%	-1.2%
Union	109	5	4.6%	126	5	4.0%	-0.6%
Columbia	330	18	5.5%	240	12	5.0%	-0.5%
Malheur	388	37	9.5%	330	31	9.4%	-0.1%
Gilliam	3	0	0.0%	9	0	0.0%	0.0%
Wheeler	6	0	0.0%	12	0	0.0%	0.0%
Washington	1,305	62	4.8%	1,741	84	4.8%	0.1%
Hood River	157	4	2.5%	141	4	2.8%	0.3%
Douglas	749	46	6.1%	562	38	6.8%	0.6%
Clackamas	1,340	39	2.9%	1,304	47	3.6%	0.7%
Lake	41	2	4.9%	35	2	5.7%	0.8%
Wasco	174	6	3.4%	173	8	4.6%	1.2%
Jefferson	224	2	0.9%	151	4	2.6%	1.8%
Polk	422	33	7.8%	359	36	10.0%	2.2%
Grant	35	3	8.6%	18	2	11.1%	2.5%
Josephine	373	12	3.2%	323	22	6.8%	3.6%
Baker	125	3	2.4%	115	7	6.1%	3.7%
Wallowa	47	0	0.0%	27	1	3.7%	3.7%
Umatilla	630	44	7.0%	560	64	11.4%	4.4%

Trend data – These data look at statewide/Lane County data for each year independently. For example, it looks at all juveniles with a criminal referral in 2003 and follows them for 12 months. Then, it looks at all juveniles offenders in 2004 and tracks them for 12 months. It answers the question, “Of all juvenile offenders in a single year, how often do they re-offend over a 12 month period?”

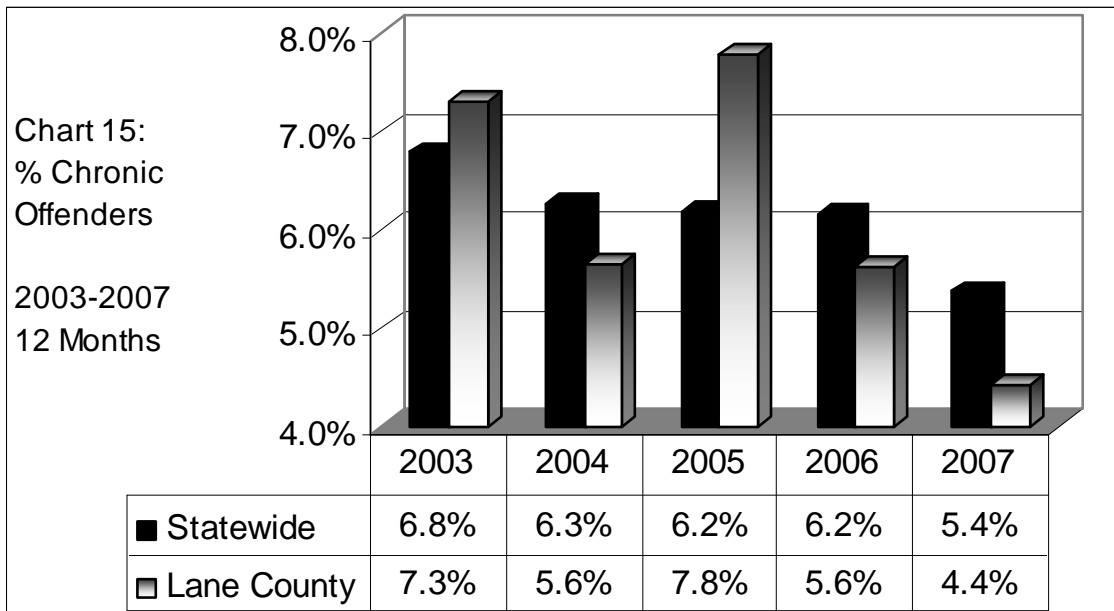
Percent Who Do Not Re-offend:

- Lane County has stayed very close to the state each year, having a difference of -2.2 to 4.1 percent.
- Both Lane and statewide data have increased since 2003 (showing an increase in the percent of offenders who do not re-offend).
- Lane’s data show an increase over five years (68.1% to 73.7%, a 5.6% difference). Respectively, the statewide data indicates an increase over five years (68.0% to 70.1%, a 2.1% difference).



Percent Chronic Offenders:

- Lane County has stayed very close to the state each year, having a difference of -0.9 to 1.6 percent.
- Both Lane and statewide data have decreased since 2003 (showing a decrease in the percent of offenders who were chronic).
- Lane’s data show a decrease over five years (7.3% to 4.4%, a 2.9% difference). Respectively, the statewide data indicates a decrease over five years (6.8% to 5.4%, a 1.4% difference).



***LANE COUNTY JUVENILE RE-OFFENSE
DATA***

Decision Point and Program Level Data

As described in the introduction, Youth Services reviews juvenile re-offense data at three levels:

- System Level – Looks at all juveniles referred to Youth Services and tracks the extent to which they re-offend. It is the focus of this report
- Decision Point Level – Looks at re-offenses for juveniles referred to a specific part of the juvenile justice system, e.g., detention, probation, diversion programs, etc.
- Program Level – Each decision point has specific programs like (examples only):
 - Youth Court programs at the diversion decision point
 - Anger Management at the intake decision point
 - Residential alcohol and other treatment at the probation decision point

While this report focused on system level data, the methods used to review re-offense data at the system level are applied to decision point and program level analyses. More detailed information on these studies are reported in Youth Services' performance measures found in the annual budget. Also, these data are reviewed through individual program evaluations for all Youth Services' programs – both internal programs and also those for which the county contracts for services.

The chart on the following page illustrates the relationship between these different levels. Chart 14 shows the three different levels with examples of programs provided by Youth Services.

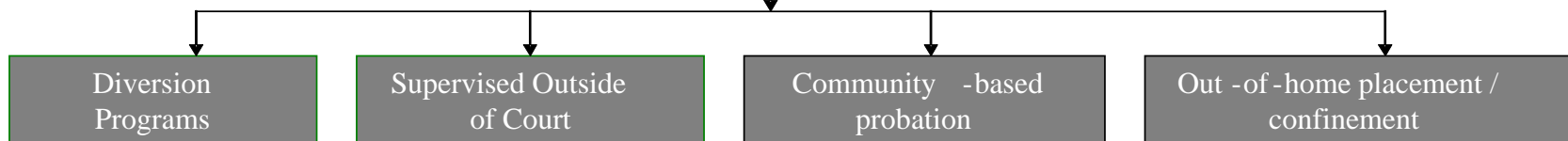
Chart 15 is a graphic illustration of tracking pre / post program recidivism. Findings at the decision point and program level also includes a description of re-offense data for all juveniles and based on demographic information.

Chart 14: Tracking Juvenile Re-offenses – 3 Levels

1. System →

Juvenile Department

2. Decision Points



- Diversion Programs (Youth Courts, Victim / Offender Mediation, etc.)
- Offender -specific Programs (Sex Offenders, Arsonists)
 - Community Service/Restitution to Victims
 - Intensive Drug Treatment
 - MLK Jr. Educational Center
 - Mental Health Services
 - Juvenile Drug Court

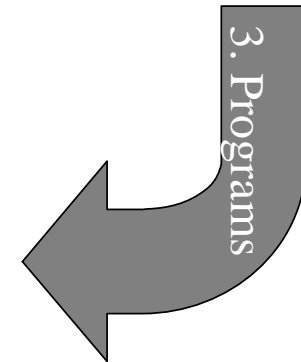
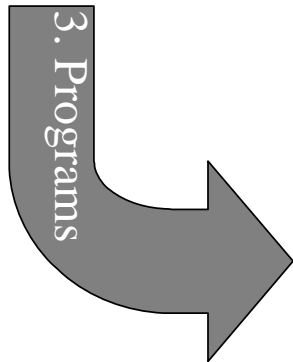
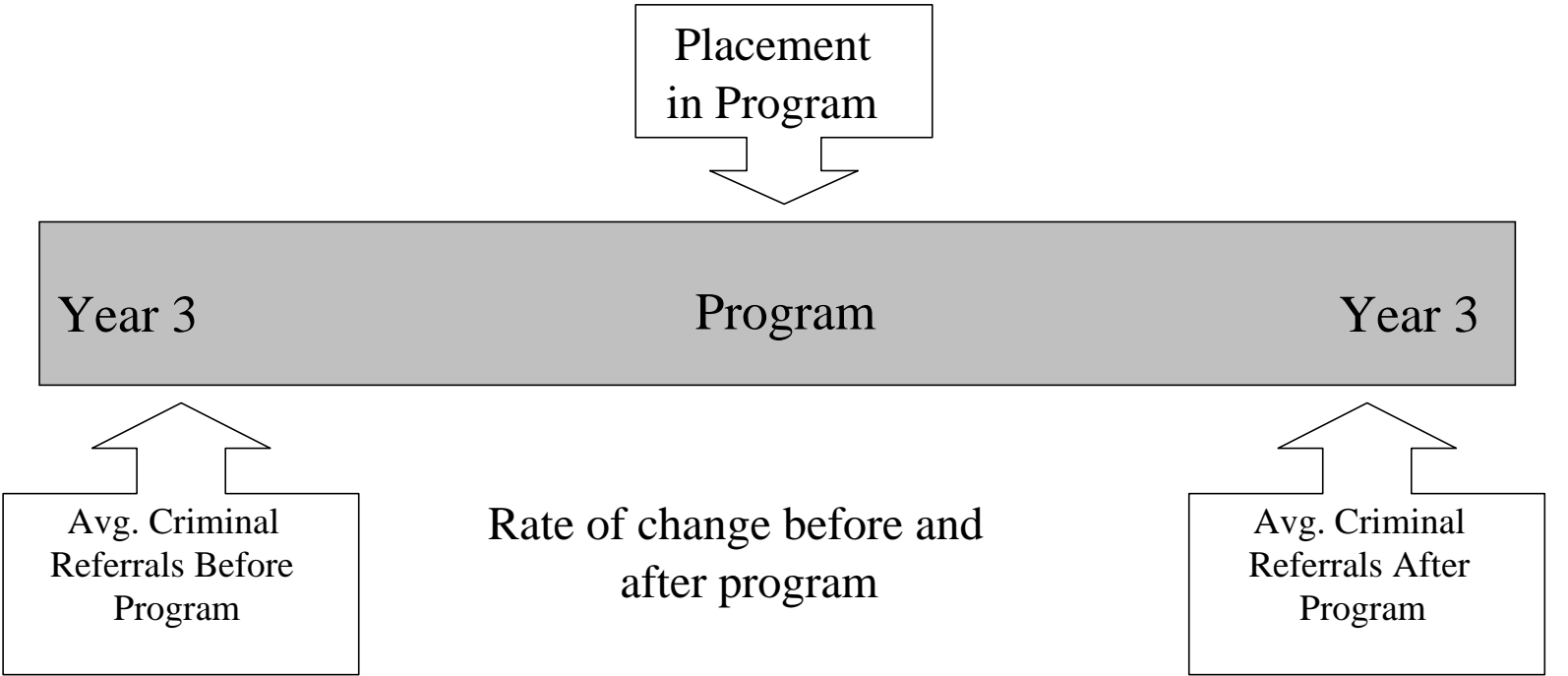


Chart 15: Tracking Program Level Juvenile Re-offenses



SUMMARY

Youth Services and the Lane County Information Services Department has developed local technology to track juvenile re-offenses for Lane County juvenile offenders. These offenders are tracked throughout Oregon as the technology builds on the statewide Juvenile Justice Information System. This local capacity assists Lane County in its efforts to:

- Conduct research on how well the system is at reducing juvenile re-offenses
- Look at the impact of the entire system, a specific decision point, and individual programs
- Track offenders for longer periods of time
- Report on re-offenses by demographic information and location of Lane County
- Track performance measure
- Conduct program evaluation including cost avoidance studies
- Compare Lane's progress to specific statewide data

These efforts are part of the county's focus on accountability for public funds by evaluating the extent to which programs reach their intended goal of reducing victimization by juvenile offenders.

These data have identified a smaller group of offenders who commit the majority of criminal referrals. The likelihood that high risk juvenile offenders go on to become chronic offenders can be reduced and, thereby, significantly reducing juvenile crime in our community. That does not mean that low risk offenders should not receive services. Juvenile offenders need to be held accountable for their actions and provide victim restoration. More intensive services, however, yield the best return on their higher cost by targeting those most likely to re-offend.

Specific program evaluations, performance measure, arrest data, and other relevant juvenile justice information may be located on Youth Services' web page (see contacts).

CONTACTS

Juvenile Justice Program Information Contact:

Lisa Smith, Director Lane County Department of Youth Services
541.682.4705 (phone)
541.682.4732 (fax)
Lisa.D.Smith@co.lane.or.us

Juvenile Crime Statistics Contact:

Linda Wagner, Senior Management Analyst
541.682.4792 (phone)
541.682.4732 (fax)
Linda.M.Wagner@co.lane.or.us

Report Prepared by:

Laurie Lane, Administrative Analyst
541.682.4779 (phone)
541.682.2425 (fax)
Laurie.C.Lane@co.lane.or.us

Youth Services Published Reports and Program Evaluations:

www.lanecounty.org/ys

State of Oregon Reports/Publications:

Oregon Youth Authority
530 Center Street NE, Suite 200
Salem OR 97301-3765
503.373.7205 (phone)
503.373.7622 (fax)
http://www.oregon.gov/OYA/rpts_pubs.shtml